

CRYSTORAMA

1958

95 Cantiague Rock Road, Westbury NY 11590
 ph: 516.931.9090 fax: 516.931.1254
info@crystorama.com www.crystorama.com

MODEL #: 293-DB ASSEMBLY AND DRESSING INSTRUCTIONS

WARNING:



Electrical Danger

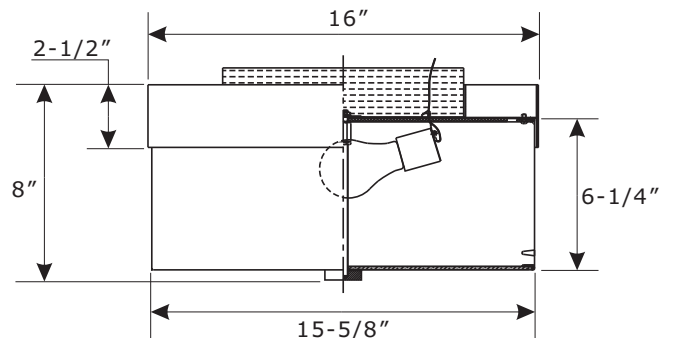
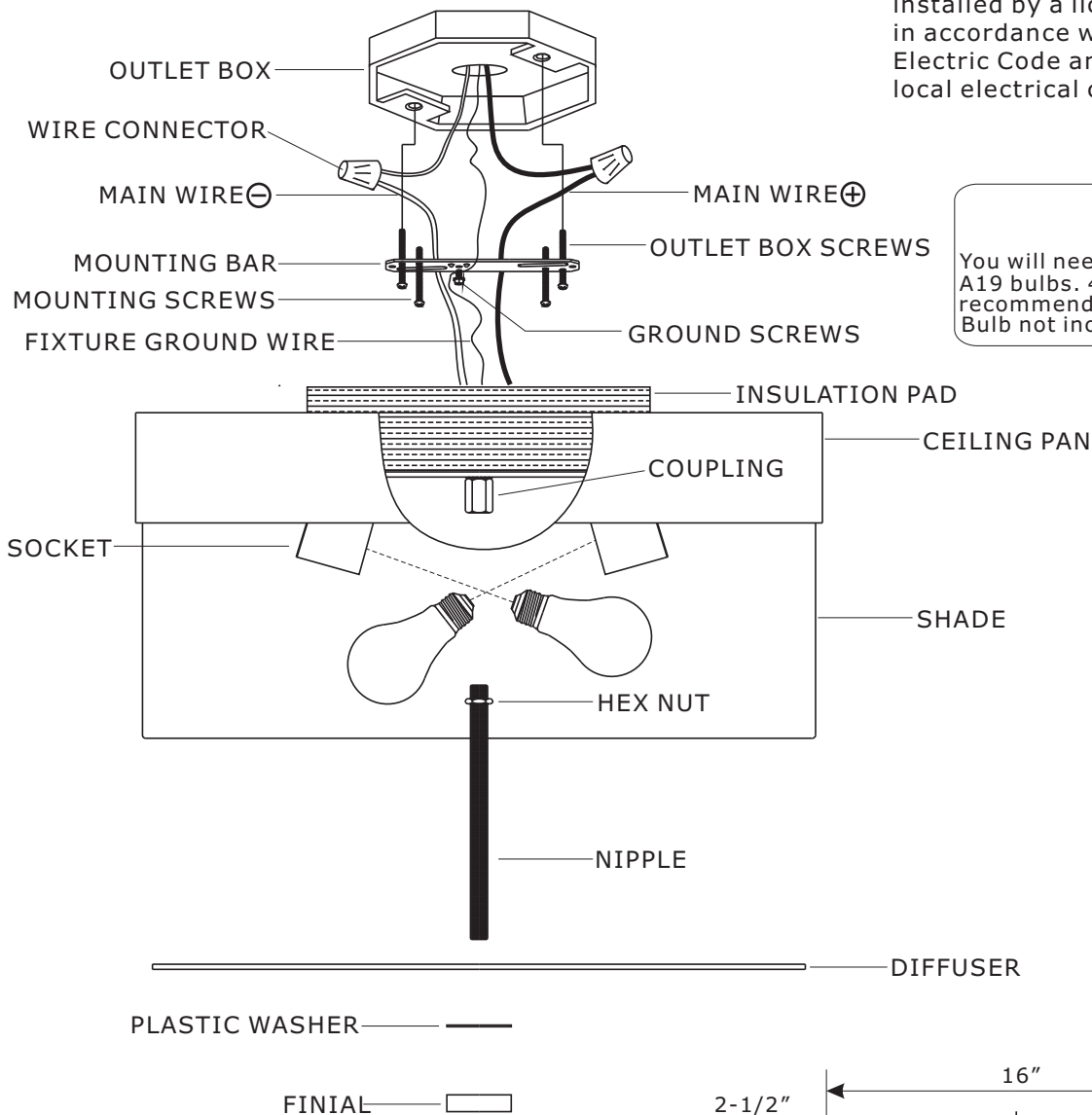


Turn Power off

All electrical components must be installed by a licensed electrician in accordance with the National Electric Code and the appropriate local electrical codes.



You will need 3 **Frosted** Medium A19 bulbs. 40 Watts recommended 60 Watts max. Bulb not included.



HOW TO REPLACE BULB:

REMOVE BOTTOM FINIAL AND DIFFUSER TO REPLACE PREVIOUS BULB W / NEW BULB.

2016-06